

# winterhalter

---

## Spare parts list GR 62/2 / GR 62/3

Edited:

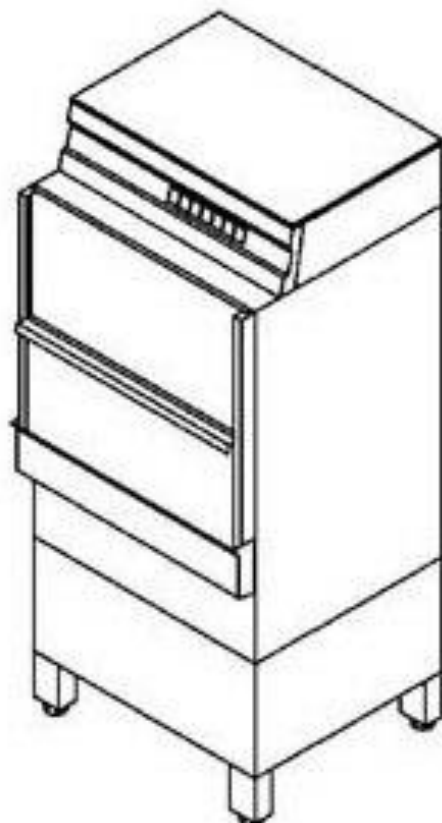
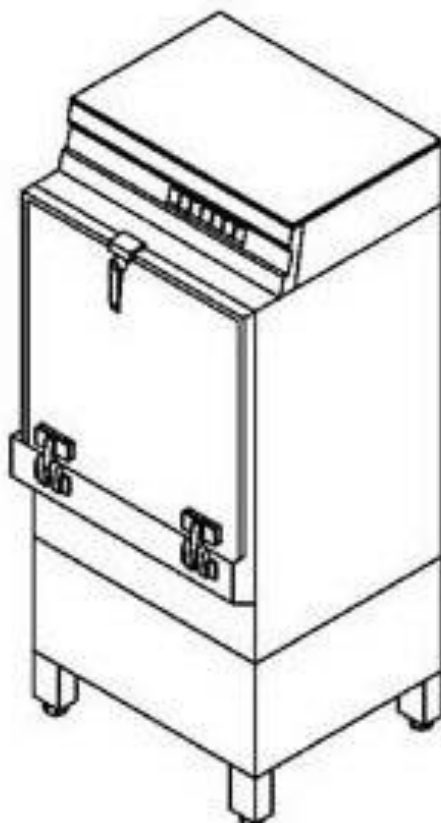
12/95

Revised:

01.09.08

Part.-no.:

89001813



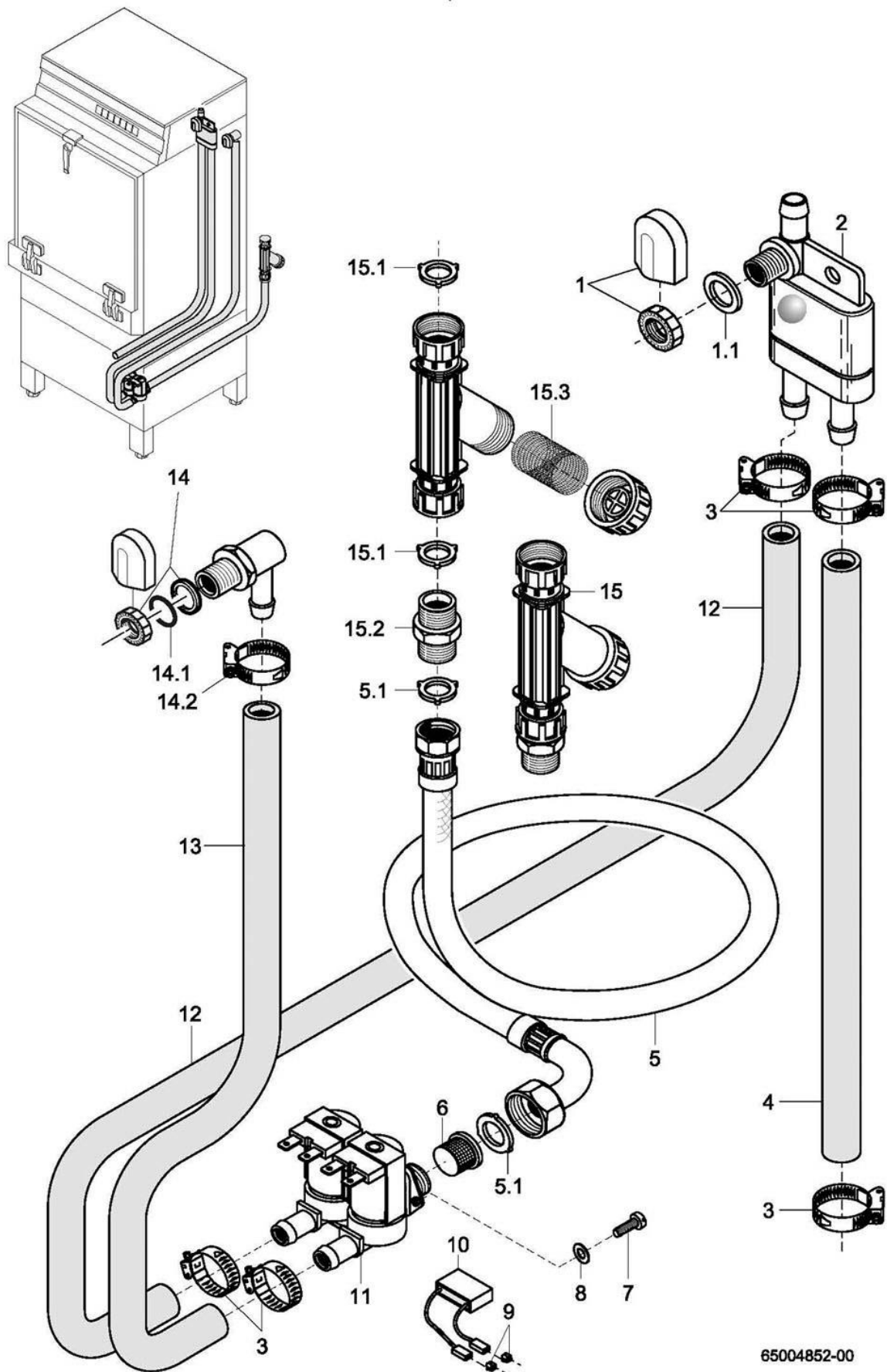
## Summary

Water inlet	Page	1	and	2
Water drain and tank heating	Page	3	and	4
Mediamat	Page	5	and	6
Wash system I - mach.-no.: ⇨ 231 260	Page	7	and	8
Wash system I - mach.-no.: 231 261 ⇨	Page	9	and	10
Wash system II	Page	11	and	12
Wash system III	Page	13	and	14
Reversing	Page	15	and	16
Rinsing I	Page	17	and	18
Rinsing II - AquaMatik	Page	19	and	20
Rinsing III - AquaMatik	Page	21	and	22
Rinsing IV	Page	23	and	24
Dosing	Page	25	and	26
Door GR 62/2	Page	27	and	28
Door GR 62/3	Page	29	and	30
Door limit switch	Page	31	and	32
Panelling	Page	33	and	34
Electrical parts I	Page	35	and	36
Electrical parts II	Page	37	and	38
Electrical parts II - with soft starter ⇨ 342 720	Page	39	and	40
Electrical parts III	Page	41	and	42
Cold water pre-rinsing (Option)	Page	43	and	44
Drain pump (Option)	Page	45	and	46
Cake ring - cleaning drum (Option)	Page	47	and	48

Please note the following points with regard to this list:

See separate list for racks and accessories.

Enter the required quantity in the column marked "Pc." if more than 1part is installed and if this part is not a standard part.

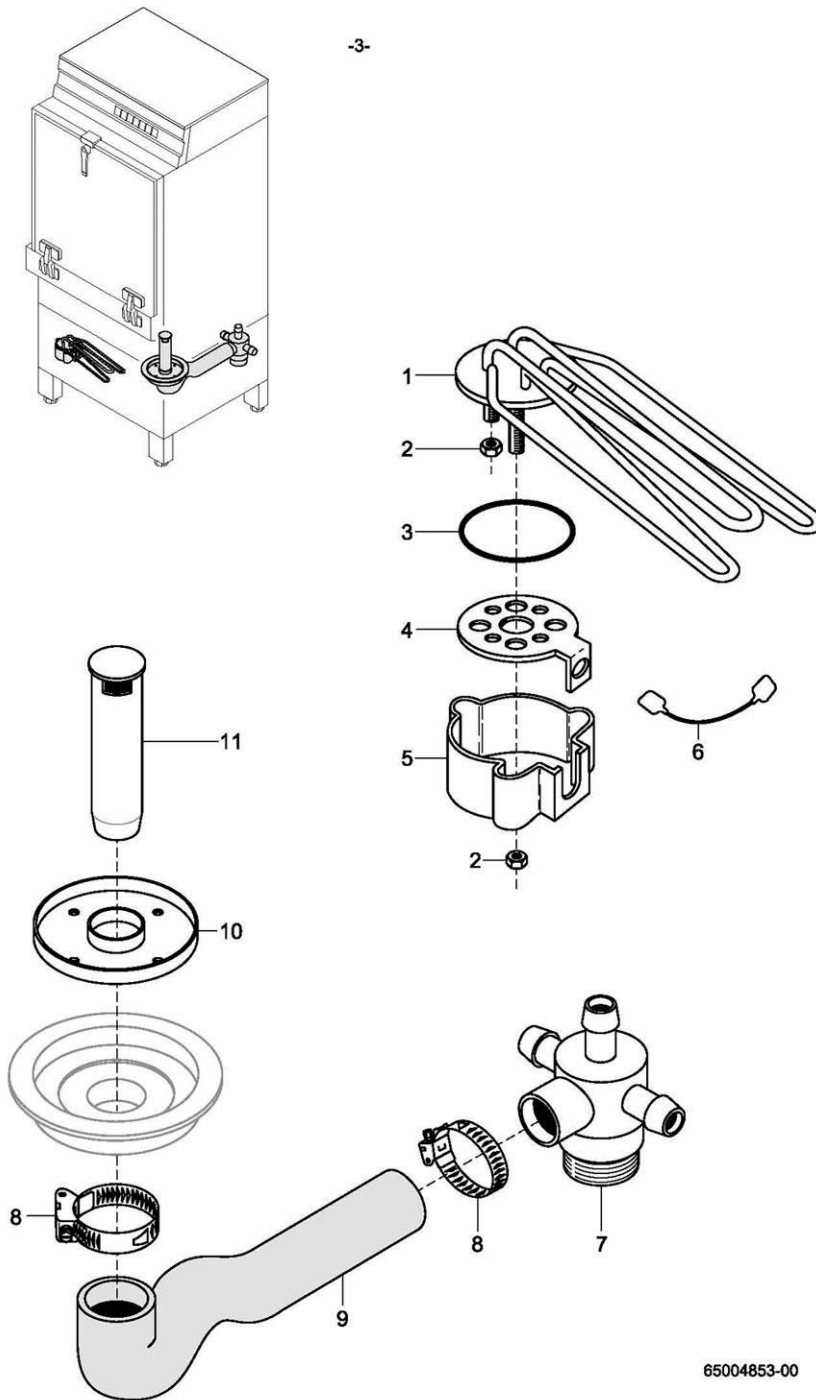


65004852-00

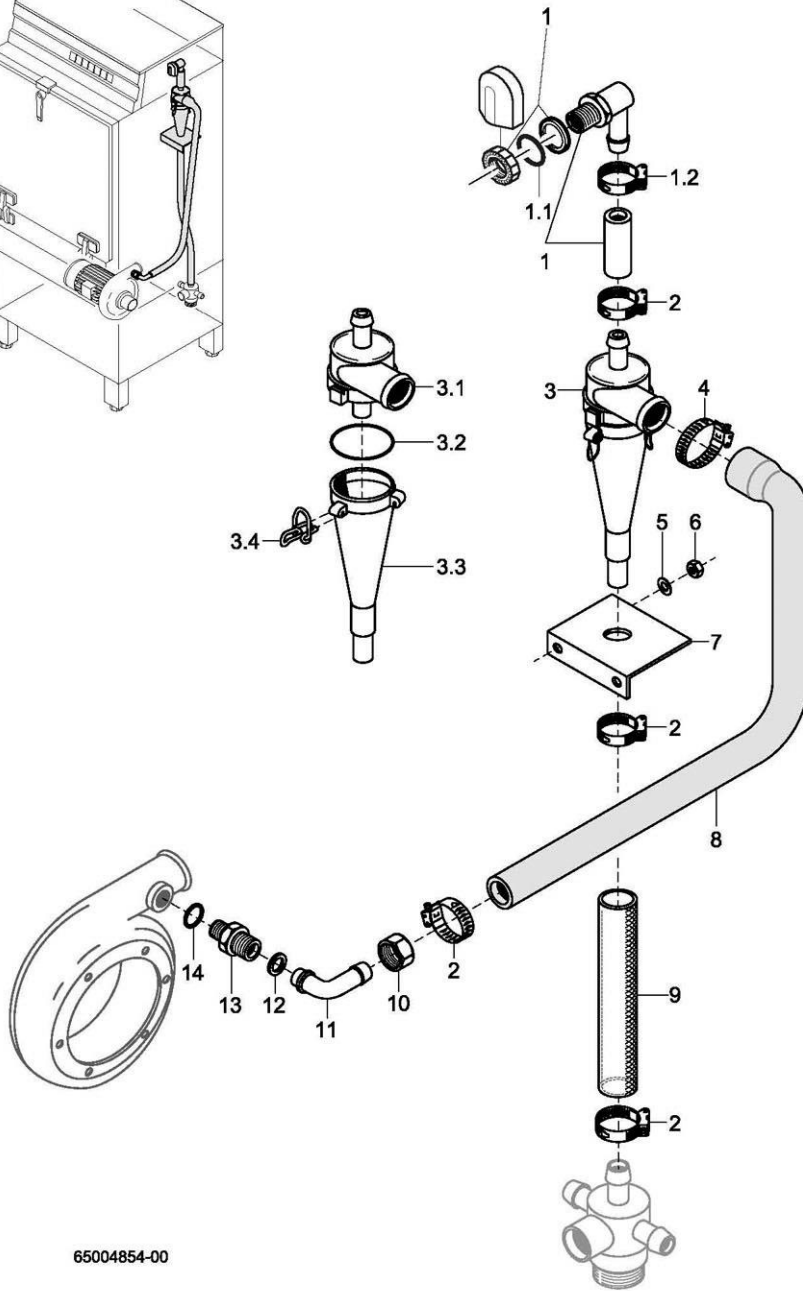
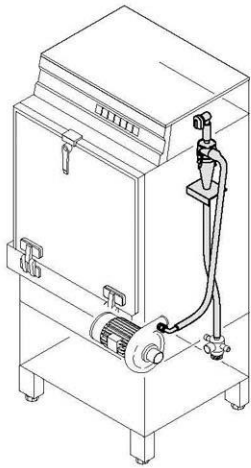
**GR 62/2**

Water inlet

Item	Designation	Part no.	Pc.	Notes
1	Tank inlet set	61004545		incl. item 1.1
1.1	Seal; $\varnothing$ 17 x $\varnothing$ 24 x 2.0	62001366		
2	Backflow restrictor; lateral	35 01 194		
3	Hose clip; $\varnothing$ 14 - 24 x 9	28 02 105		
4	Hose; nom. dia. 13.5 x 3.5 x 1580	40 02 029		per metre
5	Metal hose; nom. dia. 15 x 1500; G 3/4"	29 01 316		incl. item 5.1
5.1	Seal; $\varnothing$ 16 x $\varnothing$ 24 x 3.0	80002241	2	
6	Dirt trap	31 06 186		
7	Pan-head screw; M 4 x 8	20 10 210		
8	Washer; $\varnothing$ 4.3 x $\varnothing$ 12.0 x 1.0	22 05 300		
9	Tab connector	31 12 018	2	only with AquaMatik
10	RC element; 0.15 $\mu$ F; 3.3k $\Omega$	31 13 114		only with AquaMatik
11	Double solenoid valve; 220-240V; 50/60Hz	31 06 182		
	Double solenoid valve; 180-220V; 50/60Hz	31 06 200		Japan
12	Hose bend; nom. dia. 12.5 x 4.0	40 03 056		adapt
13	Shaped hose; nom. dia. 12.5 x 4.0	40 03 051		adapt
14	Water inlet set	55 31 007		incl. items 14.1, 14.2
14.1	Seal; D21 x D28 x 2,0	27 09 011		replaced by 55 31 007
14.1	Seal; $\varnothing$ 20.5 x $\varnothing$ 28.5 x 2.0	27 01 002		replaced by 55 31 007
14.1	O-ring; 20 x 3	27 07 031		
14.2	Hose clip; $\varnothing$ 14 - 24 x 9	28 02 105		
15	Dirt collector cpl.	80002153		incl. items 15.1, 15.2, 15.3
15.1	Seal; $\varnothing$ 16 x $\varnothing$ 24 x 3.0	80002241	3	
15.2	Union stem; G 3/4" x 40; width A/F30	80002167		
15.3	Dirt trap	80002728		







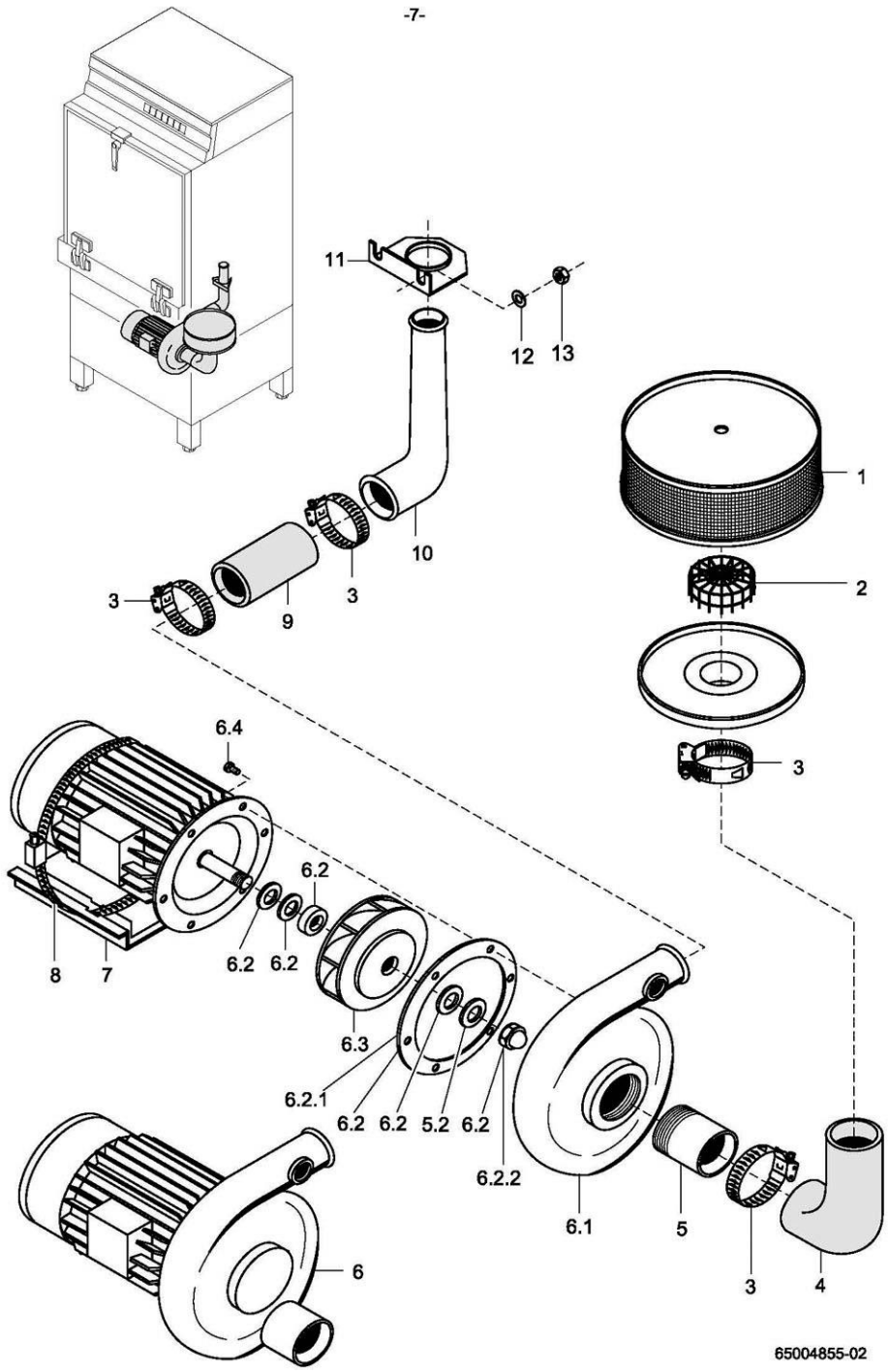
65004854-00

**GR 62/2**

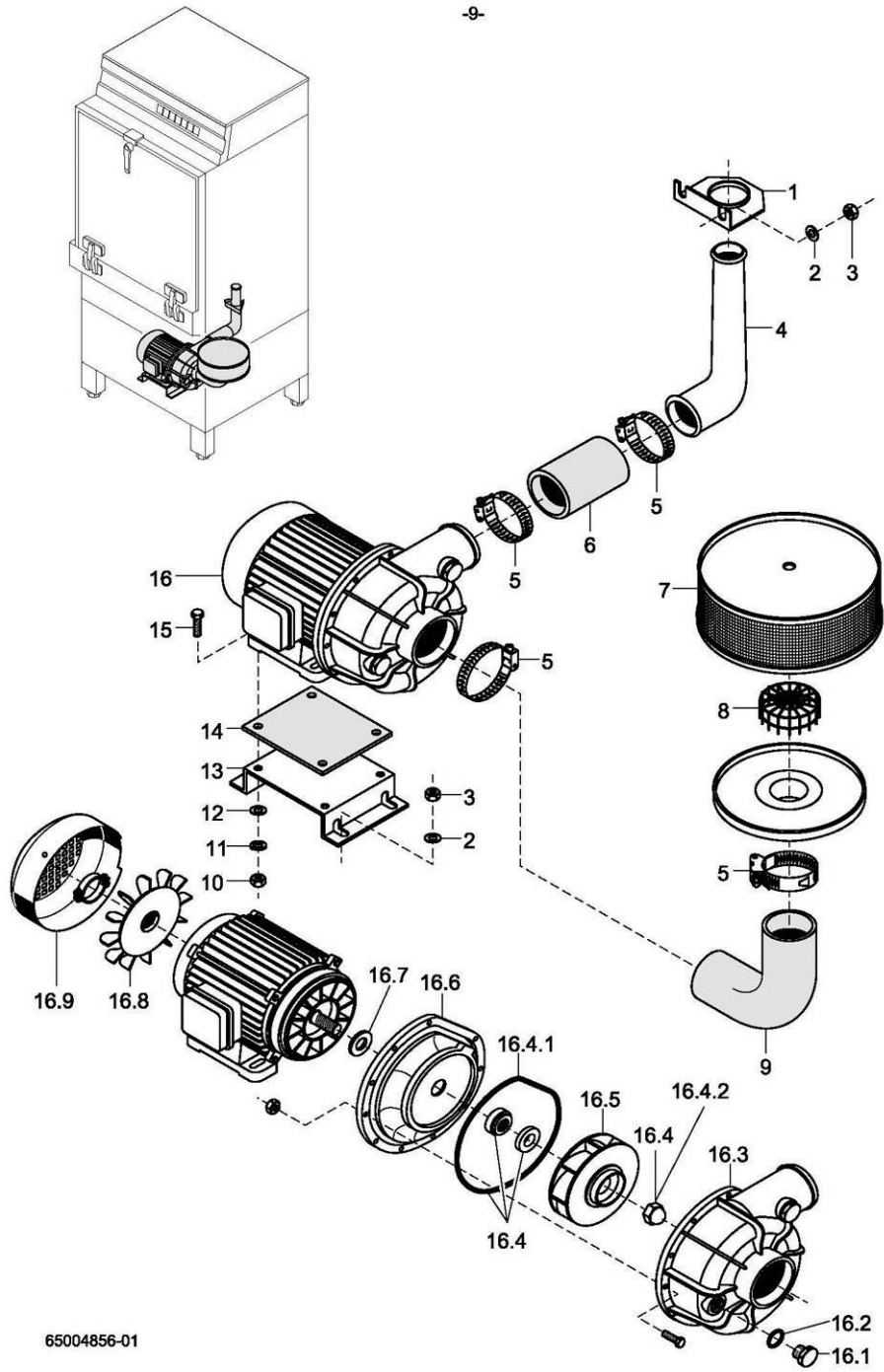
Mediamat

Item	Designation	Part no.	Pc.	Notes
1	Set Mediamat inlet	55 31 001		incl. items 1.1, 1.2, 2
1.1	Seal; D21 x D28 x 2,0	27 09 011		replaced by 55 31 001
1.1	Seal; ø 20.5 x ø 28.5 x 2.0	27 01 002		replaced by 55 31 001
1.1	O-ring; 20 x 3	27 07 031		
1.2	Hose clip; ø 20 - ø 30 x 12	28 02 109		
2	Hose clip; ø 20 - ø 30 x 12	28 02 109		
3	Mediamat cpl.	55 27 040		incl. items 3.1 - 3.4
3.1	Head piece inlet; ø 30	35 01 124		
3.2	O-ring; 51 x 3.0	27 07 043		
3.3	Accelerator; ø 75 x 169 x ø 4.3	35 01 035		
3.4	End piece fastener; ø 2	28 04 041	4	
4	Hose clip; ø 32 - ø 52 x 12	28 02 110		
5	Washer; ø 4.3 x ø 8 x 0.5	22 02 202		
6	Hex nut; M 4 self-locking	21 05 300		
7	Retaining angle	61000658		
8	Reduction hose; nom. dia. 16 x DN 30 x 5.0 x 1300	40 03 036		
9	Fabric hose; nom. dia. 19 x 3.5 x 680	40 01 016		per metre
10	Cap nut; G 3/4" x ø 20; width A/F 30 x 14	29 07 203		
11	Mediamat connecting bend	29 06 524		
12	Seal; ø 19.5 x ø 24 x 1.5	27 09 010		
13	Mediamat connecting nipple; G 1/2" x G 3/4" x 32	30 11 502		
14	O-ring; 20 x 3.5	27 07 040		







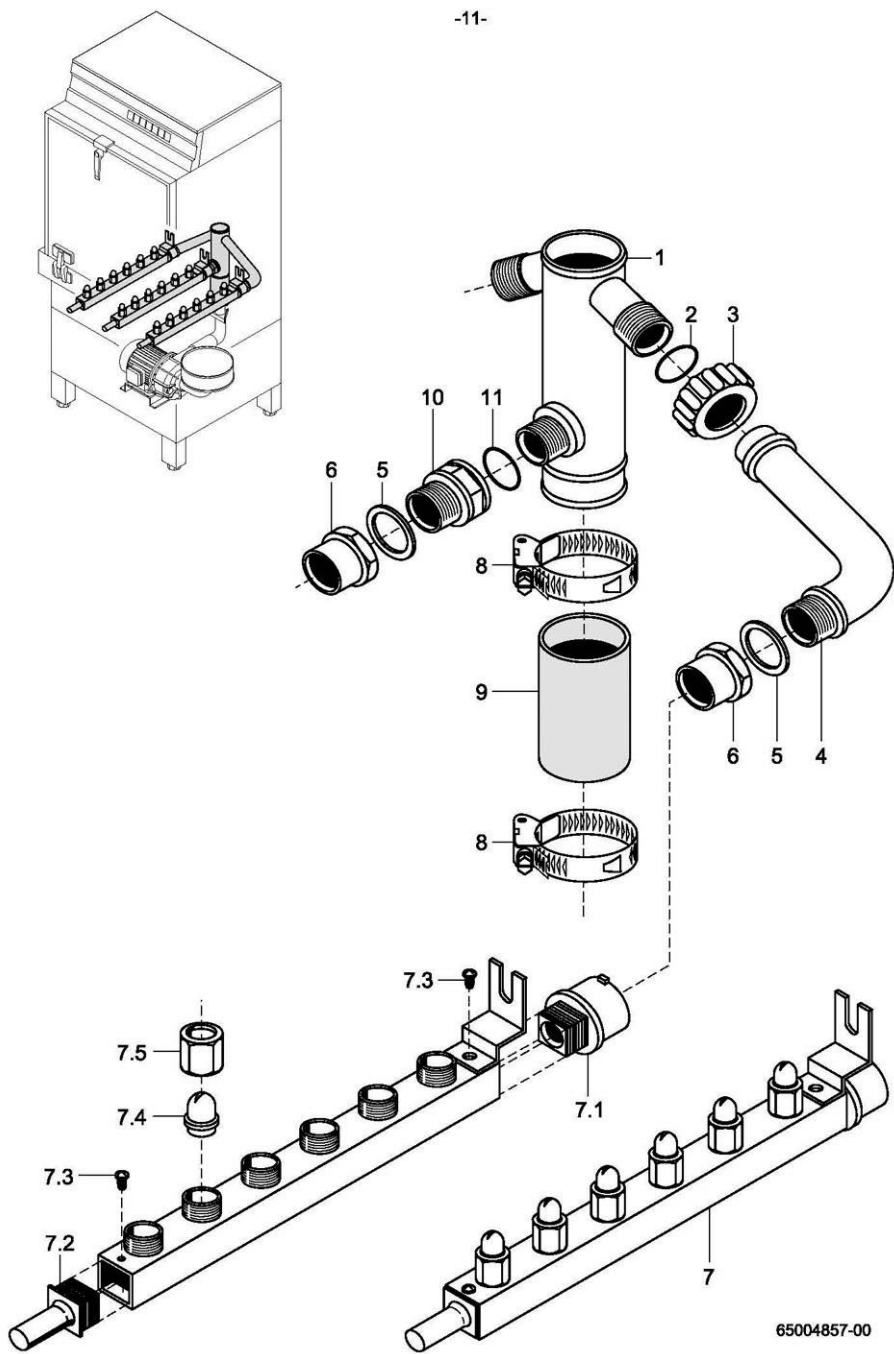


65004856-01

**GR 62/2**

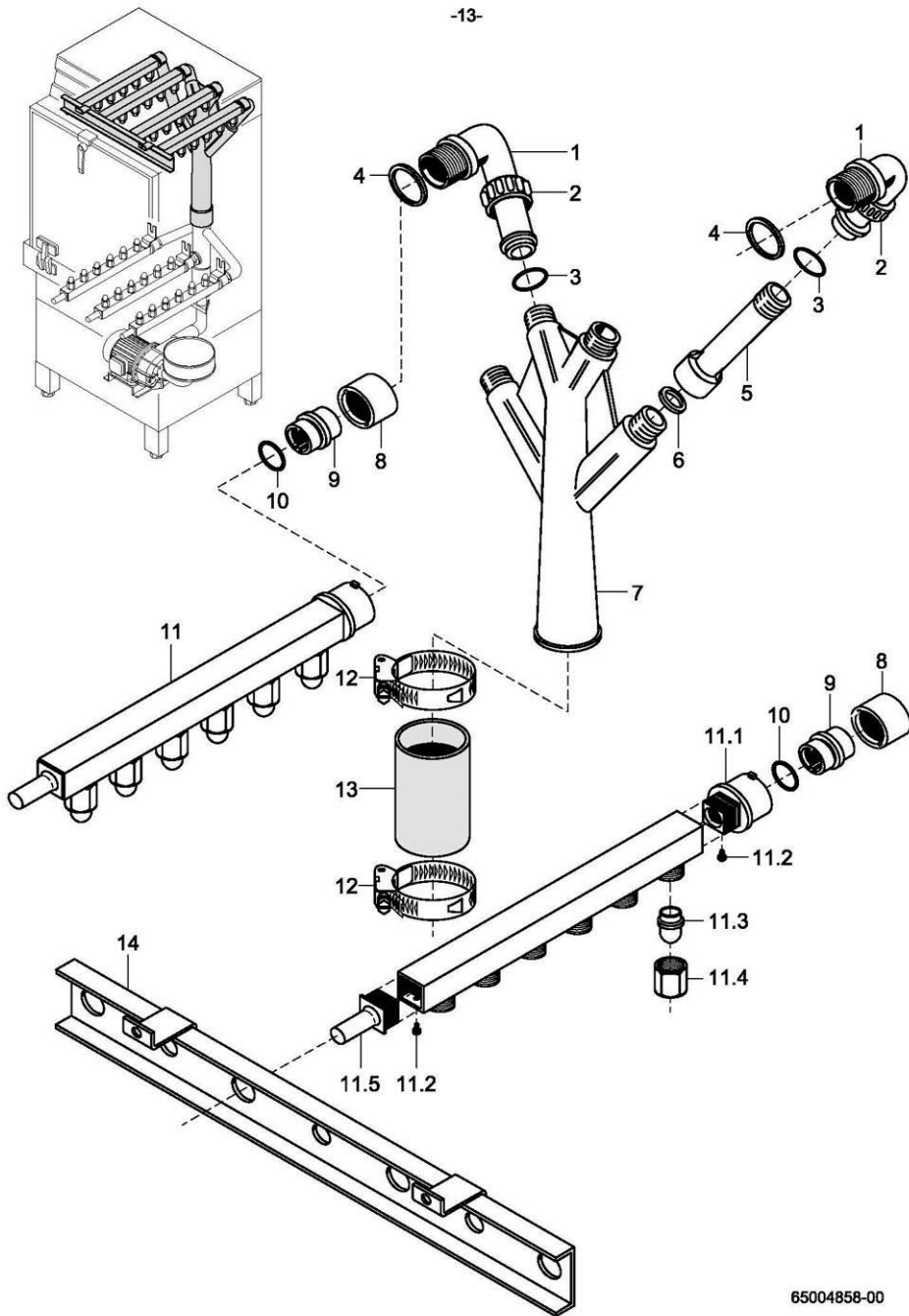
Wash system I - mach.-no.: 231 261 ⇨

Item	Designation	Part no.	Pc.	Notes
1	Support	65000023		
2	Washer; $\varnothing$ 6.4 x $\varnothing$ 12.5 x 1.6	22 01 302		
3	Hex nut; M 6 self-locking	21 05 304		
4	Reducing elbow	55 06 051		
5	Hose clip; $\varnothing$ 70 - $\varnothing$ 90 x 12	28 02 120		
6	Pump hose, $\varnothing$ 60 x 8 x 170	40 02 007		per metre
7	Pump strainer	55 13 004		
8	Intake strainer	61002500		
9	Shaped hose; nom. dia. 62 x 9.0; 80 x 180	40 03 028		
10	Hex nut; M 8	21 01 305	2	
11	Lock washer; B 8	23 03 301	2	
12	Washer; $\varnothing$ 8.4 x $\varnothing$ 17 x 1.6	22 01 303	2	
13	Pump bracket	61002191		
14	Shim	65002991		
15	Hex-head screw; M 8 x 30	20 01 304	2	
16	Pump; 2.6 kW; 230-240/400-420 V / 3 / 50 Hz	31 02 340		incl. items 16.1 - 16.9
	Pump; 2.6 kW; 230/400 V / 3 / 60 Hz	31 02 347		
	Pump; 2.6 kW; 200/346 V / 3 / 50 Hz	31 02 348		
	Pump; 2.6 kW; 200/346 V / 3 / 60 Hz	31 02 349		
16.1	Filler plug; G 1/2" x 20.5	35 01 108		
16.2	O-ring; 20 x 3.5	27 07 040		
16.3	Pump housing	31 02 243		
16.4	Sealing kit	80002671		incl. item 16.4.1, 16.4.2
16.4.1	Seal	31 02 307		
16.4.1	Nut; M14 LH	31 02 404		
16.5	Pump impeller; $\varnothing$ 136mm	31 02 306		for 50 Hz - pump
	Pump impeller; $\varnothing$ 115.5mm	31 02 310		for 60 Hz - pump
16.6	Pump cover	31 02 396		
16.7	Oil slinger	31 02 304		
16.8	Fan impeller	31 02 308		
16.9	Fan impeller cover	31 02 309		



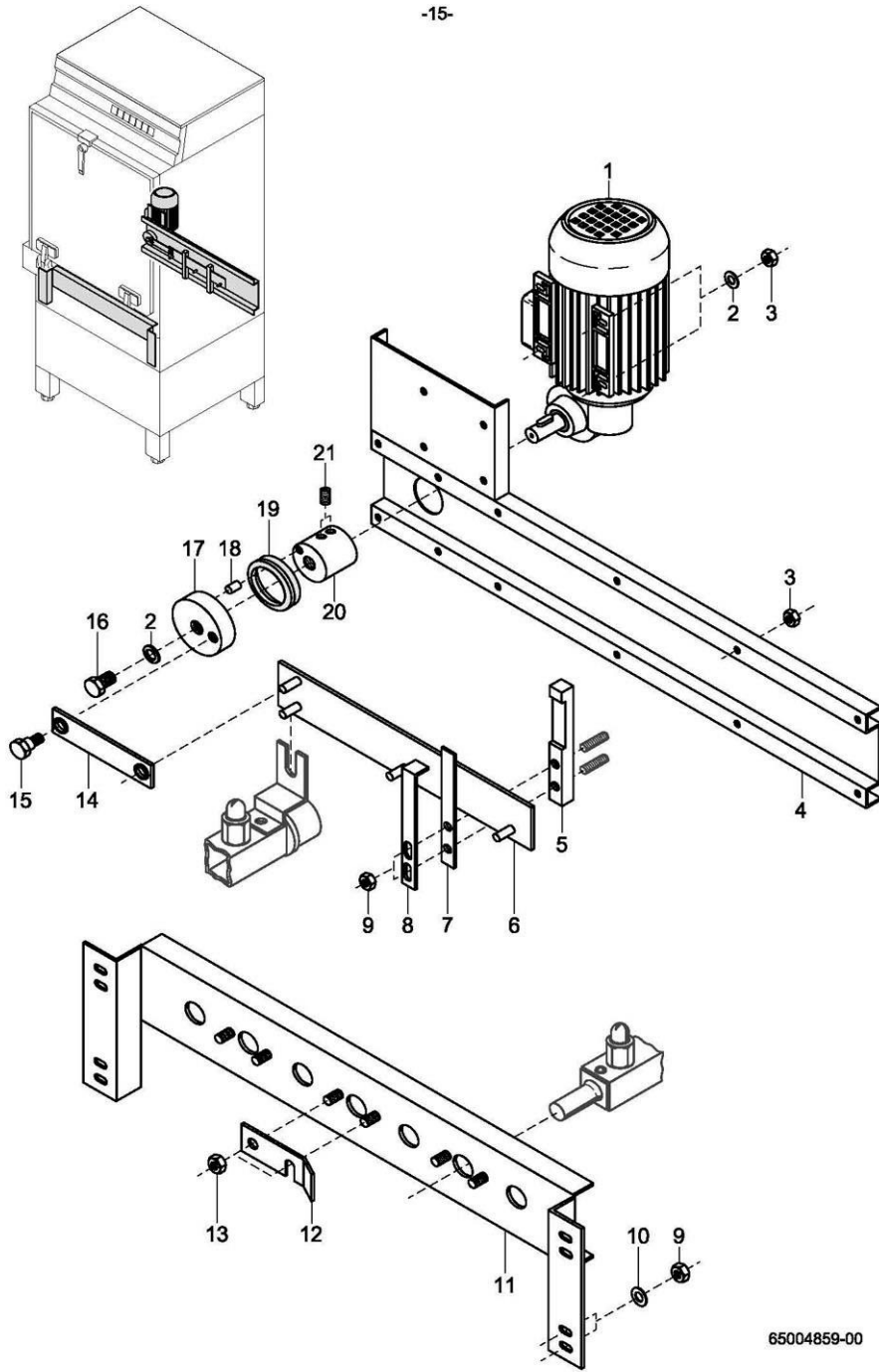
65004857-00





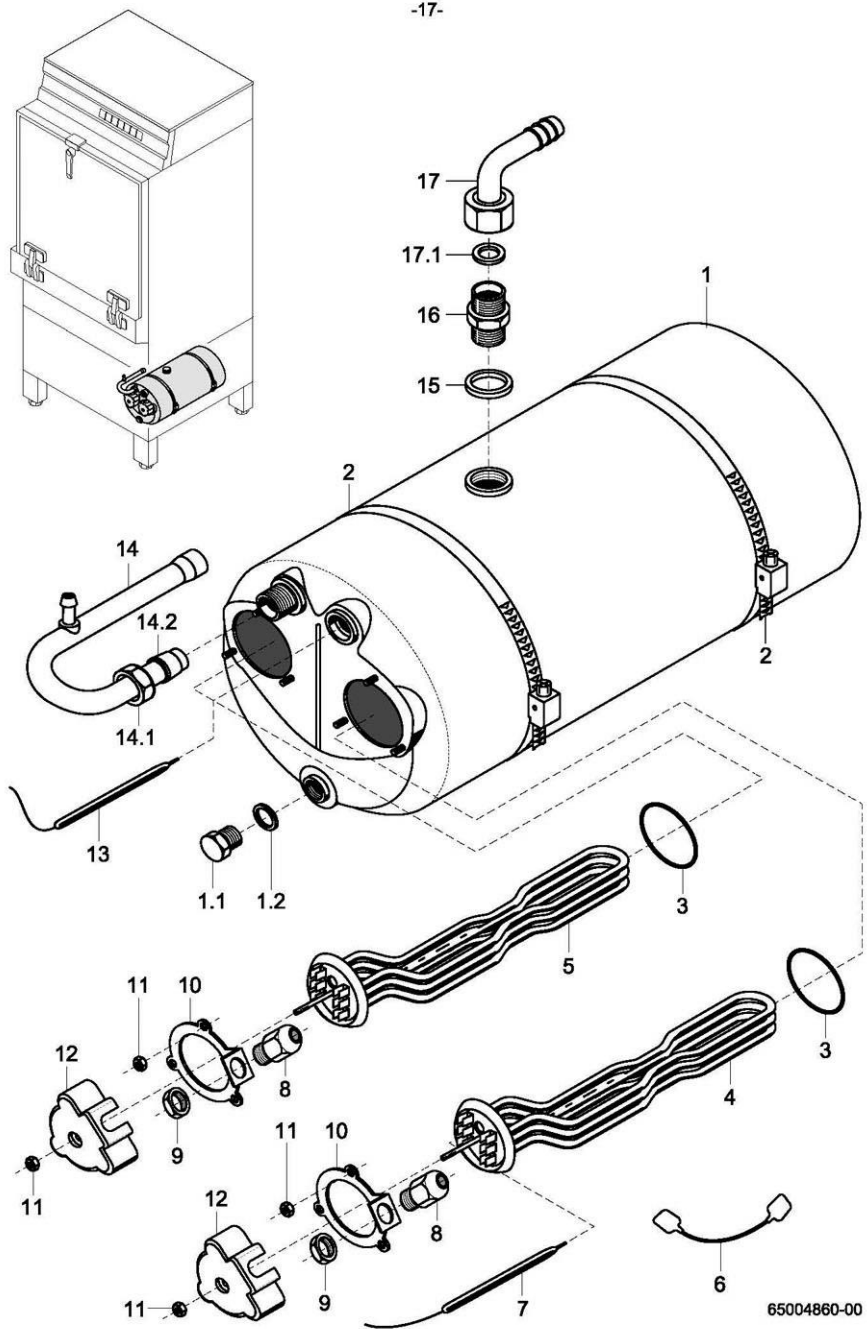






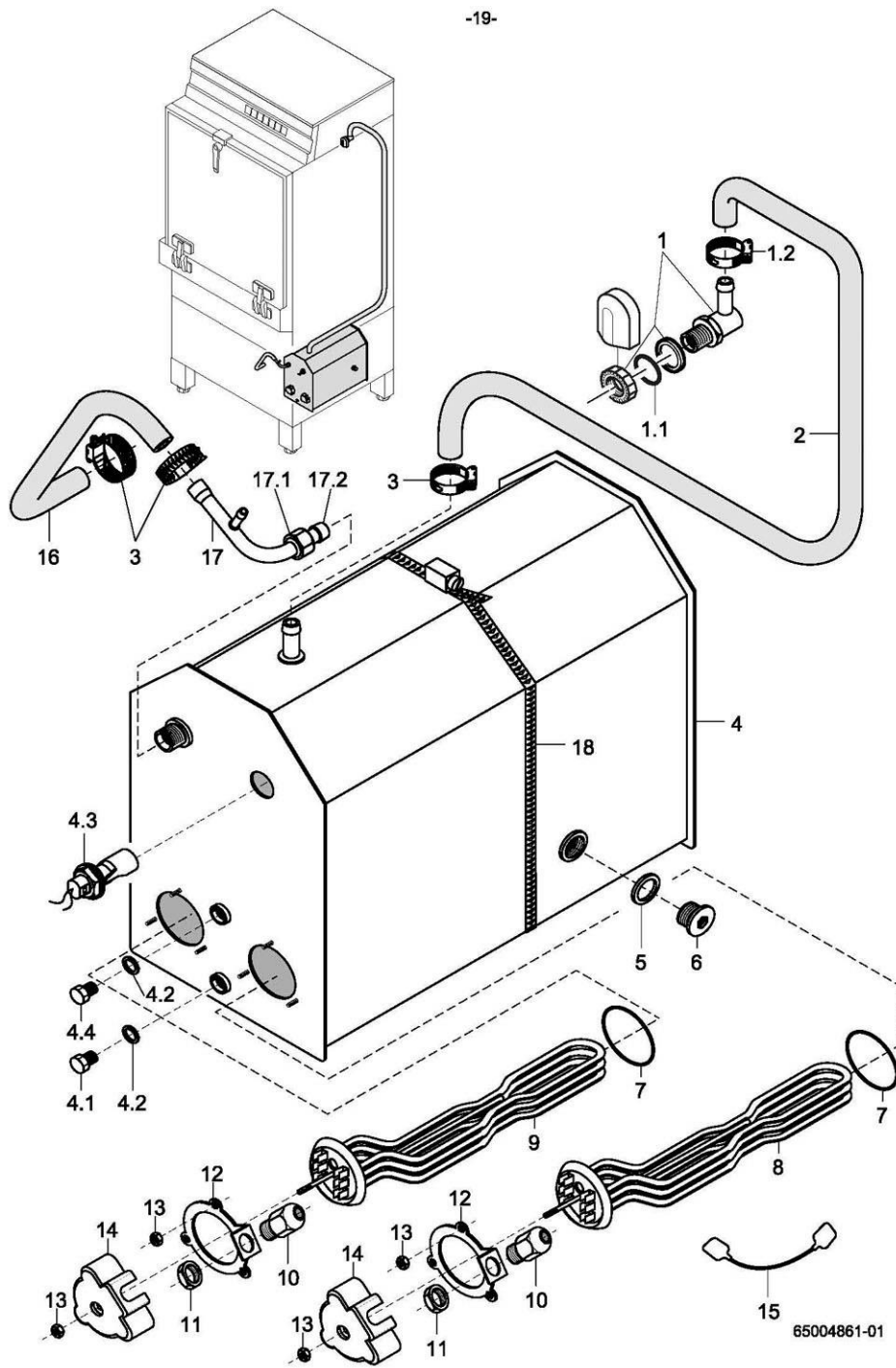
65004859-00





65004860-00



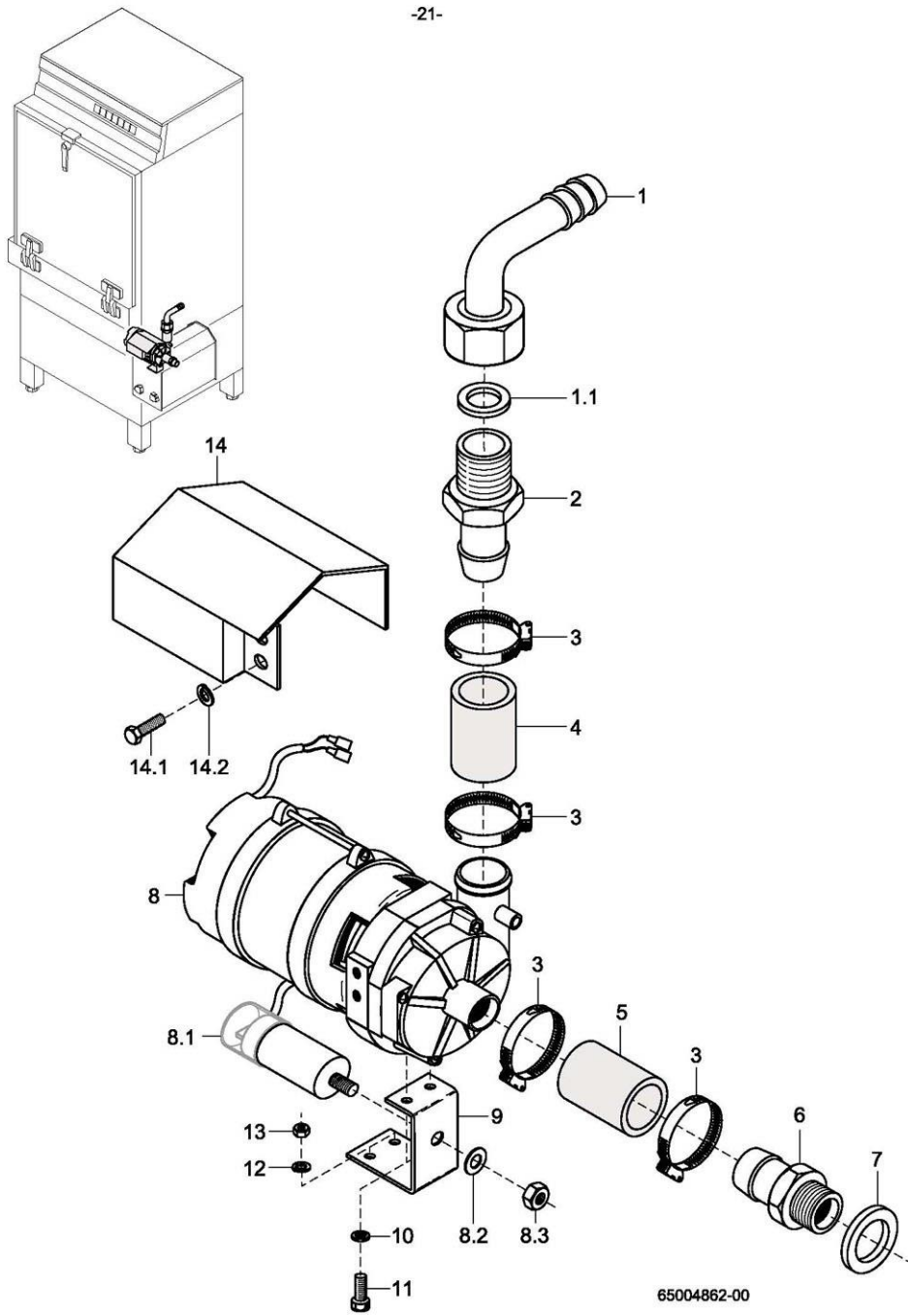


65004861-01

**GR 62/2**

Rinsing II - AquaMatik

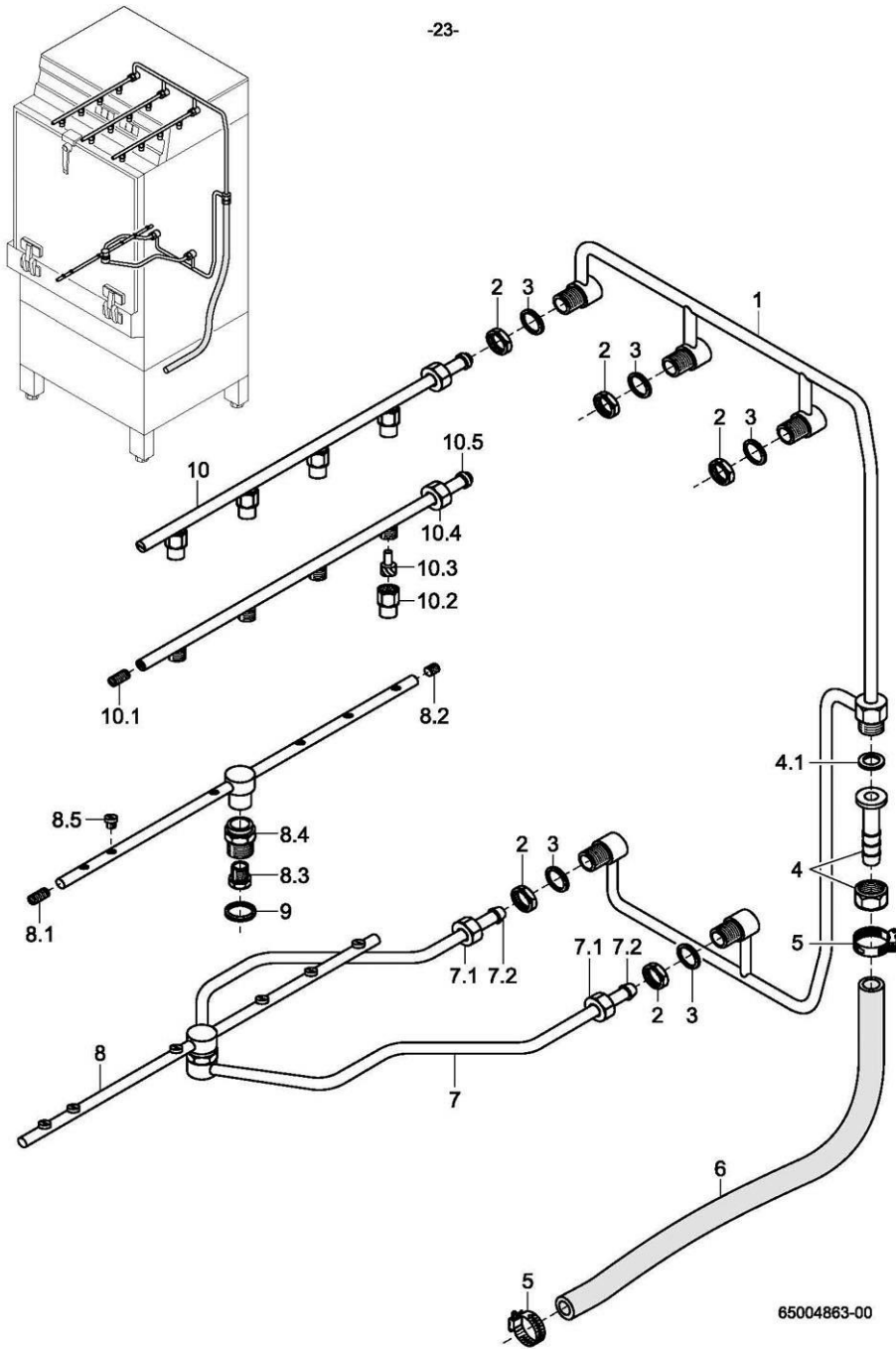
Item	Designation	Part no.	Pc.	Notes
1	Water inlet set	55 31 007		incl. items 1.1, 1.2
1.1	Seal; D21 x D28 x 2,0	27 09 011		replaced by 55 31 007
1.1	Seal; $\varnothing$ 20.5 x $\varnothing$ 28.5 x 2.0	27 01 002		replaced by 55 31 007
1.1	O-ring; 20 x 3	27 07 031		
1.2	Hose clip; $\varnothing$ 14 - 24 x 9	28 02 105		
2	Hose bend; nom. dia. 12.5 x 4.0	40 03 056		
3	Hose clip; $\varnothing$ 14 - 24 x 9	28 02 105		
4	Boiler frame cpl., non-pressurised	80002128		incl. items 4.1 – 4.4
4.1	Hex-head screw; M 10 x 16	20 01 352		
4.2	Seal; $\varnothing$ 10 x $\varnothing$ 18 x 1.5	27 03 003	2	
4.3	Float switch set; 250V; 15VA	55 28 255		
4.4	Hex-head screw; M 9 x 1 x 14	70003890		
5	Seal; $\varnothing$ 21 x $\varnothing$ 28 x 2.0	27 09 011		
6	Locking screw; G 1/2"	30 08 303		
7	O-ring; 43 x 7.0	27 07 069		
8	Heating element cranked; 6.0kW; 230V/400V/3	31 03 017		
	Heating element cranked; 6.0kW; 240V/420V/3	31 03 043		
	Heating element cranked; 6.0kW; 200V/346V/3	31 03 046		
9	Heating element cranked; 9.0kW; 230V/400V/3	31 03 018		soft starter
	Heating element cranked; 9.0kW; 240V/420V/3	31 03 057		soft starter
10	Cable gland; PG 13.5	31 10 040		
11	Hex nut; PG 13.5	31 10 041		
12	Clamping plate cpl.	55 19 018		
13	Hex nut; M 5	21 01 203		
14	Cap	31 03 014		use only with star bridge 31 23 088
15	Star bridge; 2.5 mm <sup>2</sup>	70004616	2	Do not use cap 31 03 014
	Star bridge with nozzle; 2.5 mm <sup>2</sup>	31 23 088		not available
16	Shaped hose; nom. dia. 13 x 4	40 03 053		
17	Boiler supply pipe bend cpl.	55 09 055		incl. items 17.1, 17.2
17.1	Cap nut; G 1/2" x $\varnothing$ 12.2; width across flats 24	29 07 201		
17.2	Cutting ring; $\varnothing$ 15 x 10; nom. dia. 12	29 07 300		
18	Hose clip, $\varnothing$ 167 - $\varnothing$ 187 x 12	28 02 124		



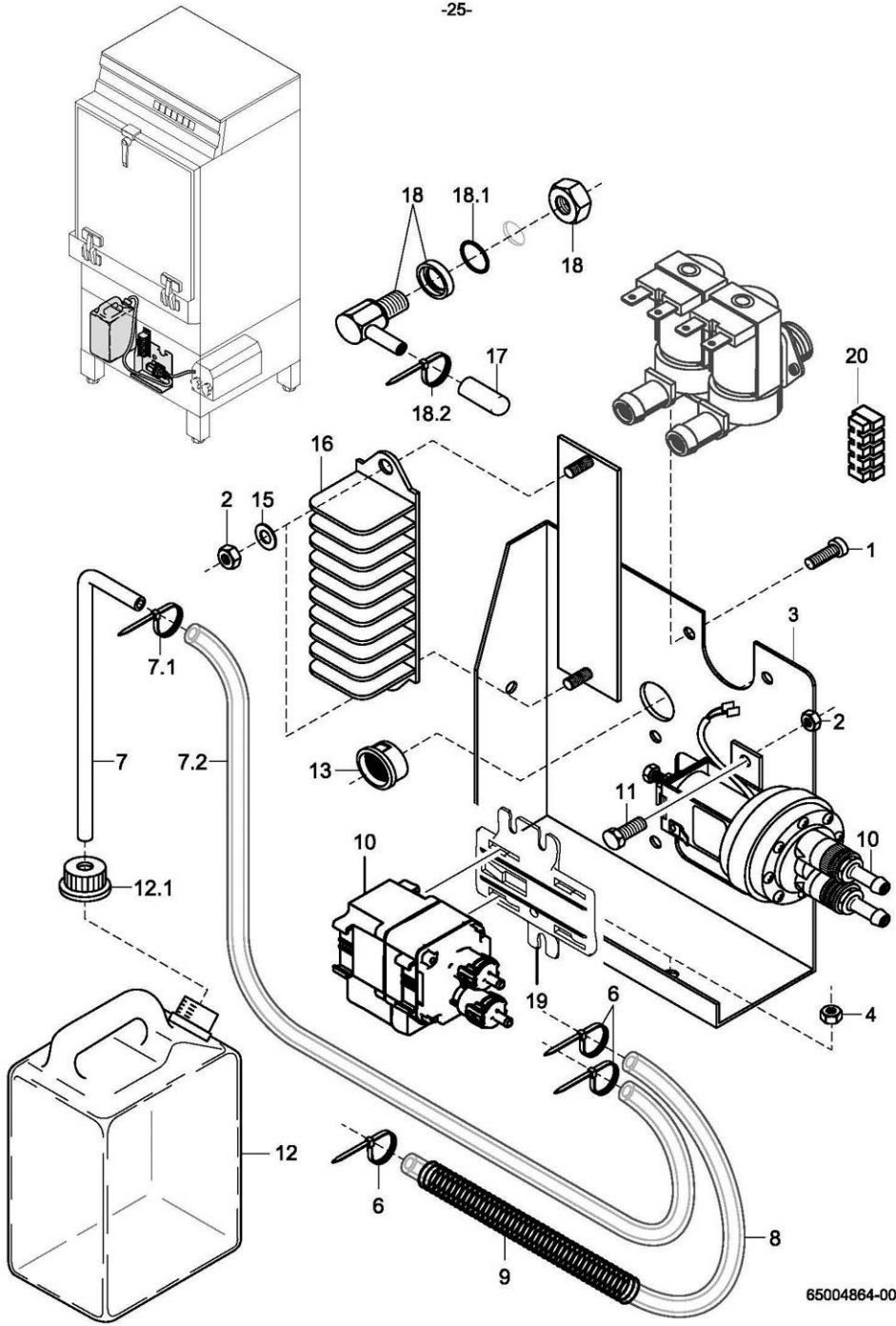
65004862-00









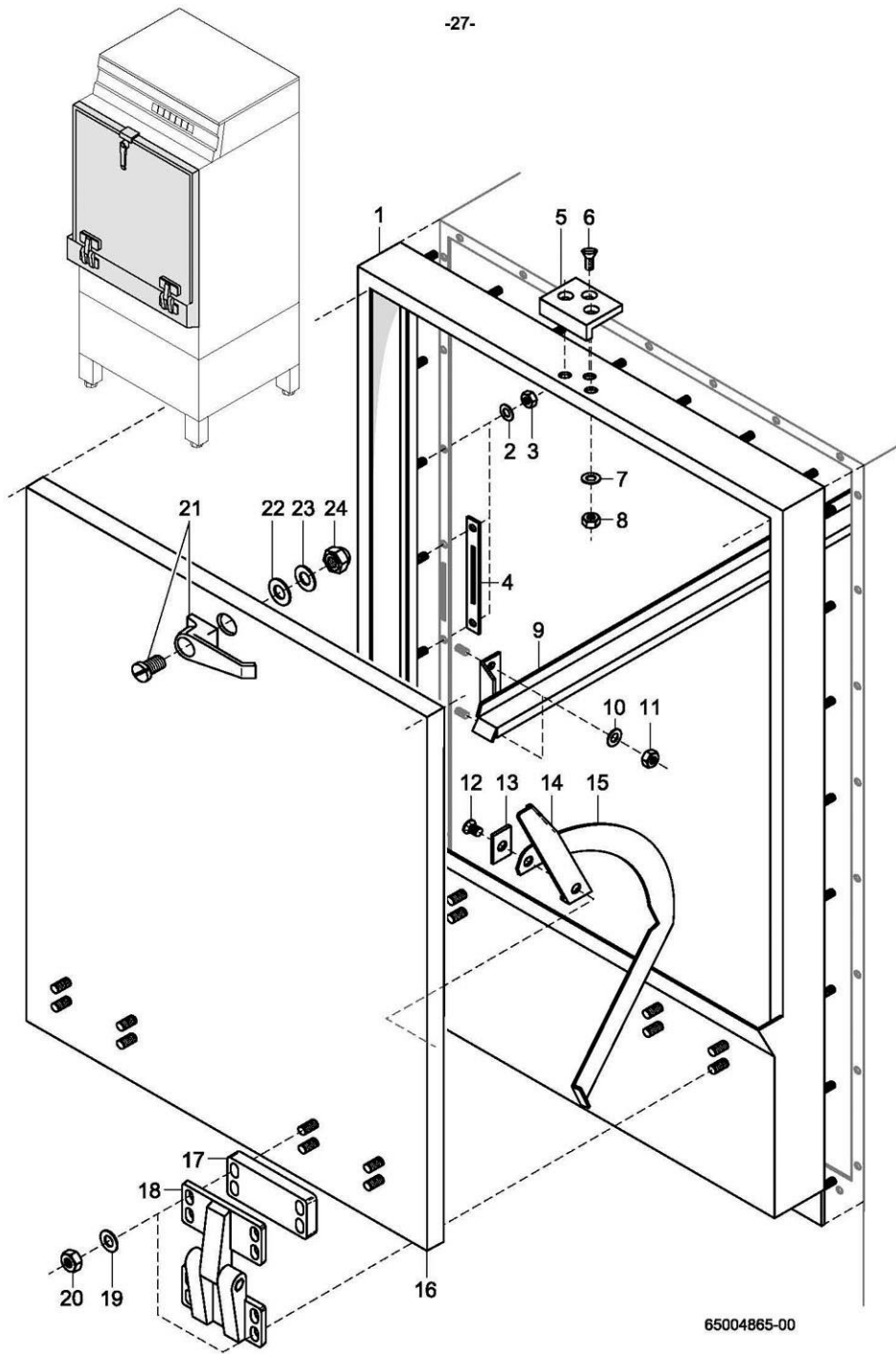


65004864-00

**GR 62/2**

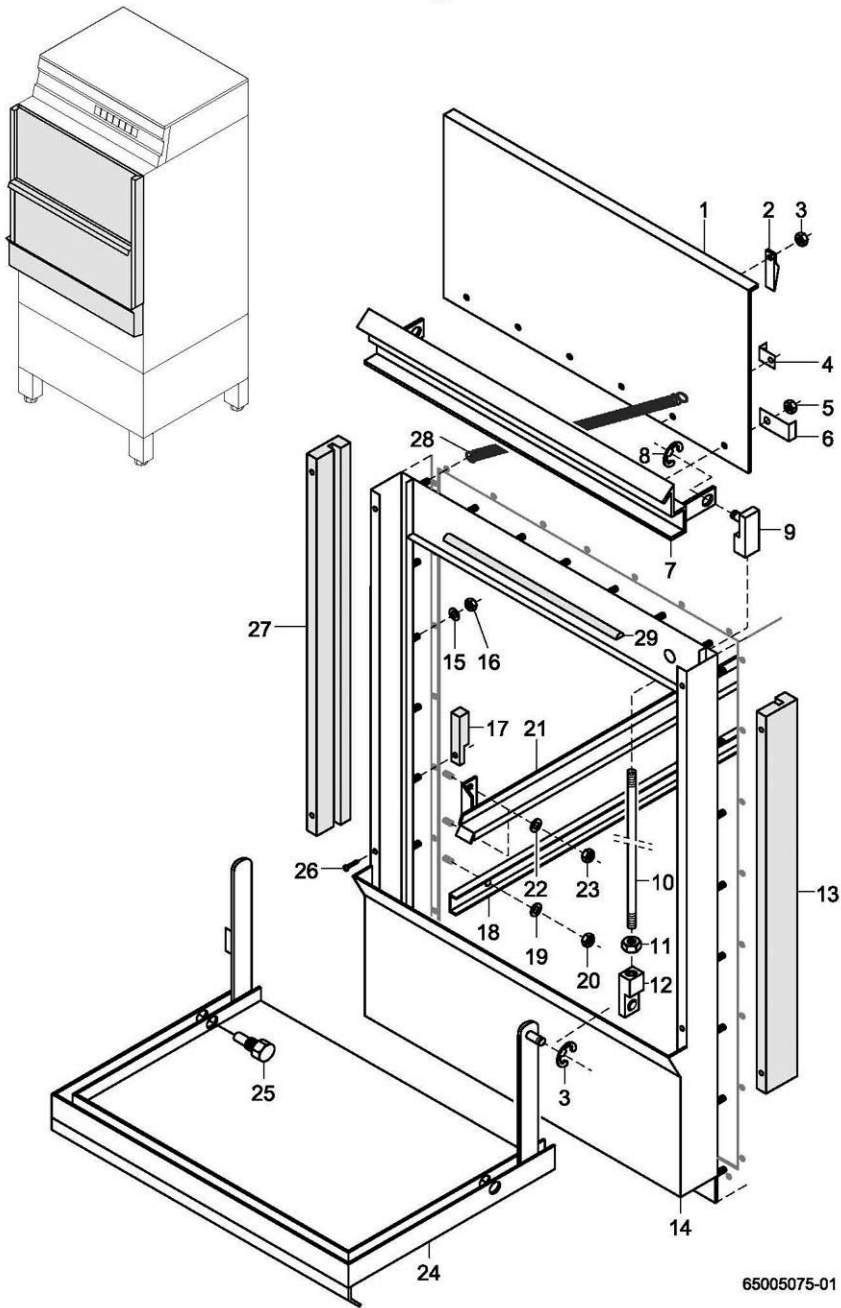
Dosing

Item	Designation	Part no.	Pc.	Notes
1	Cheese-head screw, M4 x 8	20 09 310		
2	Hex nut; M 4 self-locking	21 05 300		
3	Dosing device and solenoid valve holder	65002940		
4	Hex nut; M 6 self-locking	21 05 304		
6	Cable binder; 162 x 2.5	31 20 014		
7	Suction stick, cpl.	55 25 051		incl. items 7.1 - 7.2
7.1	Cable binder; 162 x 2.5	31 20 015		
7.2	Hose; nom. dia. 5 x 1.5 x 2,500	40 01 024		per metre
8	Hose; nom. dia. 5 x 1.5	40 01 024		per metre
9	Spring; $\varnothing$ 0.8 x $\varnothing$ 10 x 340	62002419		
10	Dosing device, ELT 10 GS right cpl.	80000555		see separate spare parts list
11	Cheese-head screw, M4 x 12	20 09 312		
12	Detergent container cpl, 3-litre	55 25 013		incl. item 12.1
12.1	Sealing cap	35 02 023		drill, if necessary
13	Snap-on bushing; $\varnothing$ 18 x $\varnothing$ 13	31 10 069		
15	Washer; $\varnothing$ 4.3 x 8 x 0,5	22 02 302		
16	Terminal strip; 9-pole	31 09 155		
17	Cap; $\varnothing$ 6 x 15	35 03 023		
18	Set dispensing nipple for detergent	62002869		incl. items 18.1, 18.2
18.1	O-ring; 10 x 2.5	27 07 030		
	Seal; $\varnothing$ 10 x $\varnothing$ 18 x 1.5			replaced by item 18
18.2	Cable binder; 162 x 2.5	31 20 014		
19	Support	80002906		
20	Binding post	31 09 230		



65004865-00



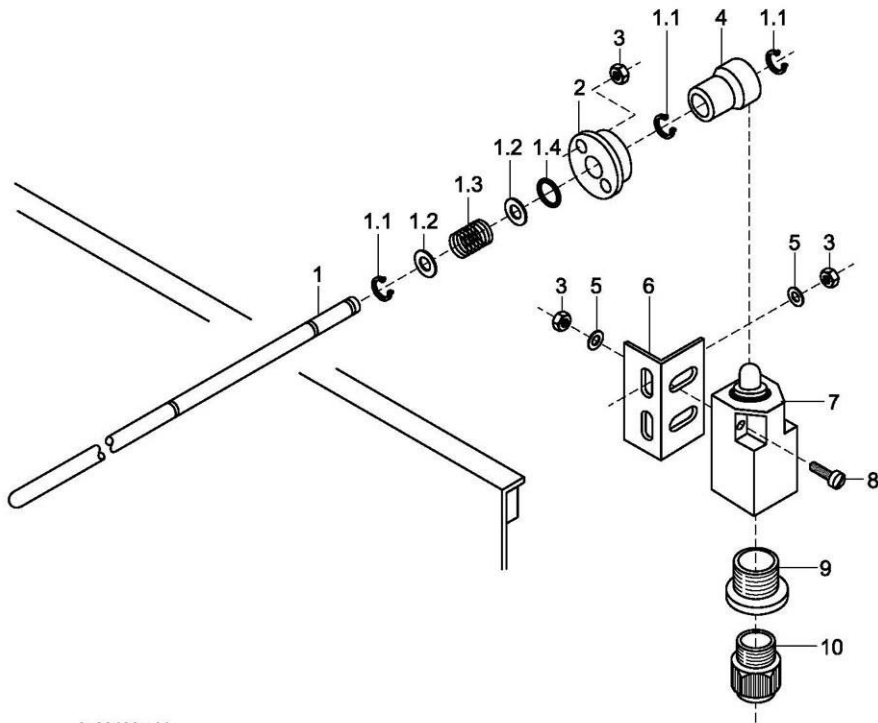
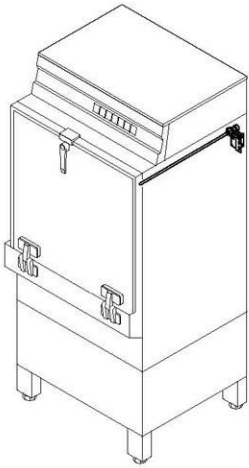


GR 62/3

Door

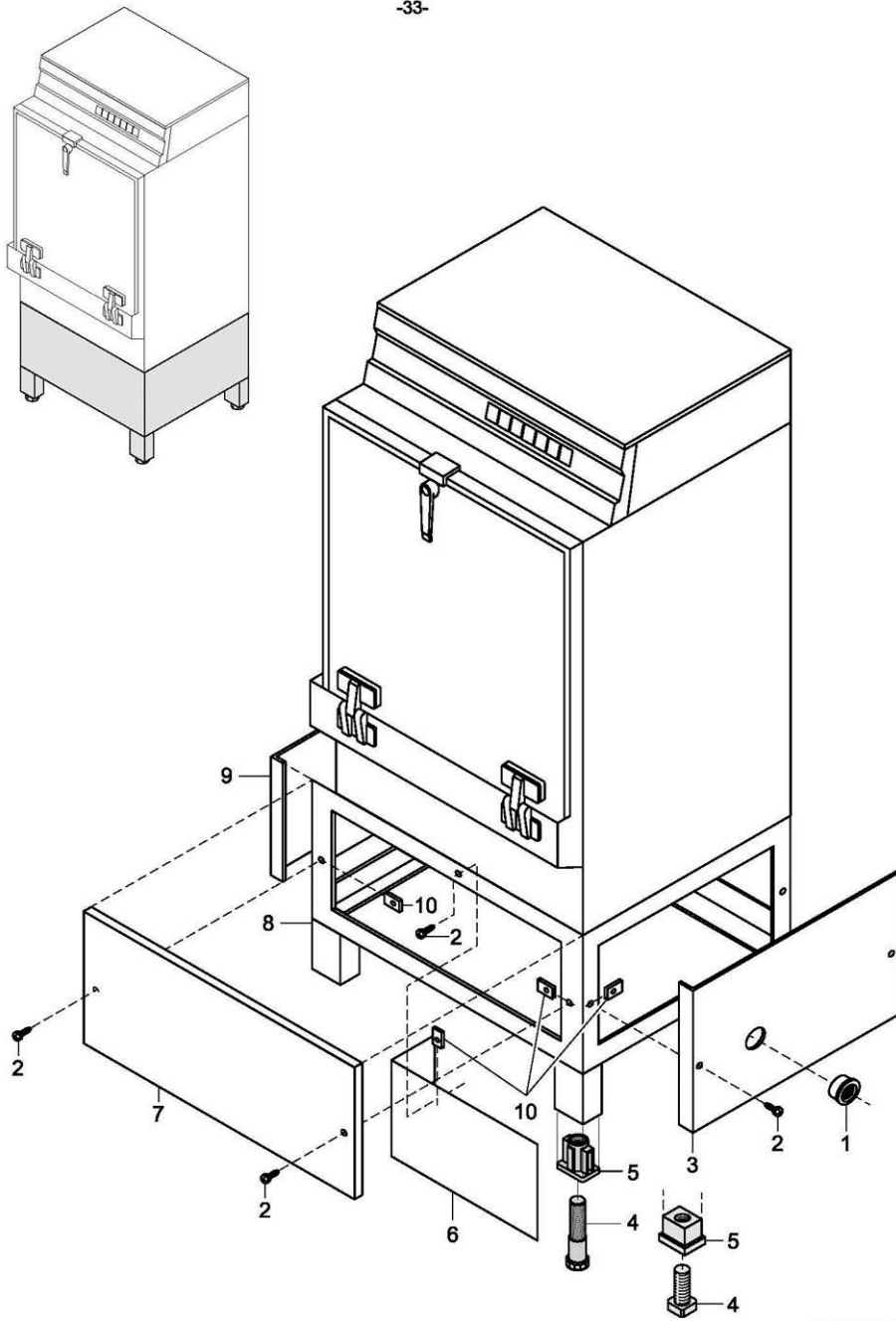
Item	Designation	Part no.	Pc.	Notes
1	Lifting door	65001550		
2	Stop wedge	65001734		
3	Lock washer; $\varnothing$ 6 x 0.7	23 10 304		
4	Angle	65003612	2	for 28 04 103 (item 28)
5	Hex nut; M 5 self-locking	21 05 302	6	
6	Angle	65003504		right
	Angle	65003505		left
7	Suspended rail	65001736		
8	Lock washer; $\varnothing$ 6 x 0.7	23 10 304	4	
9	Adjusting knob; M 8 LH	65001617	2	
10	Door push rod, $\varnothing$ 8 x 246	65001615	2	
11	Hex nut; M 8	21 01 305		
12	Adjusting knob; M 8 RH	65001616	2	
13	Guide section; right	65001620		
14	Door frame	65001730		
15	Washer; $\varnothing$ 6.4 x $\varnothing$ 12.5 x 1.6	22 01 302	32	
16	Hex nut; M 6 self-locking	21 05 304	32	
17	Lever stop	65001623	2	
18	Reinforcing section, side panel	65001696	2	
19	Washer; $\varnothing$ 6.4 x $\varnothing$ 12.5 x 1.6	22 01 302	4	
20	Hex nut; M 6 self-locking	21 05 304	4	
21	Rack rail, left	65001611		
	Rack rail, right	65001610		
22	Washer; $\varnothing$ 6.4 x $\varnothing$ 12.5 x 1.6	22 01 302	8	
23	Hex nut; M 6 self-locking	21 05 304	8	
24	Folding door	65001554		
25	Bearing bolt, width A/F 17 x 20	65001618	2	
26	Oval head screw; M 5 x 10	20 12 301	4	
27	Guiding section, left	65001621		
28	Tension spring, L0=416, DA=9.6, DD=1.6	28 04 103		
29	Gasket; 10 x 4 x 1000	62001618		per metre





65004867-00



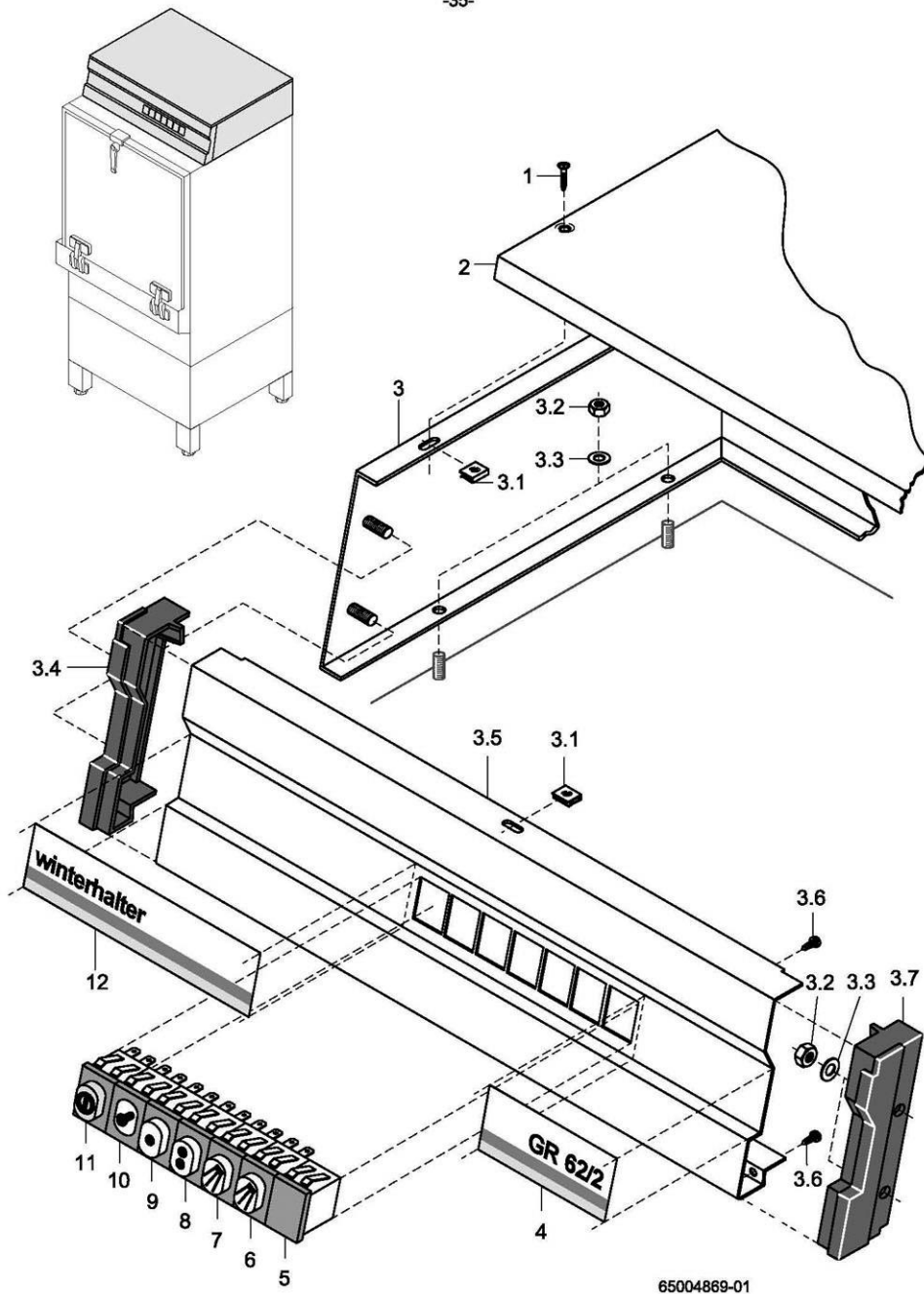


65004868-00

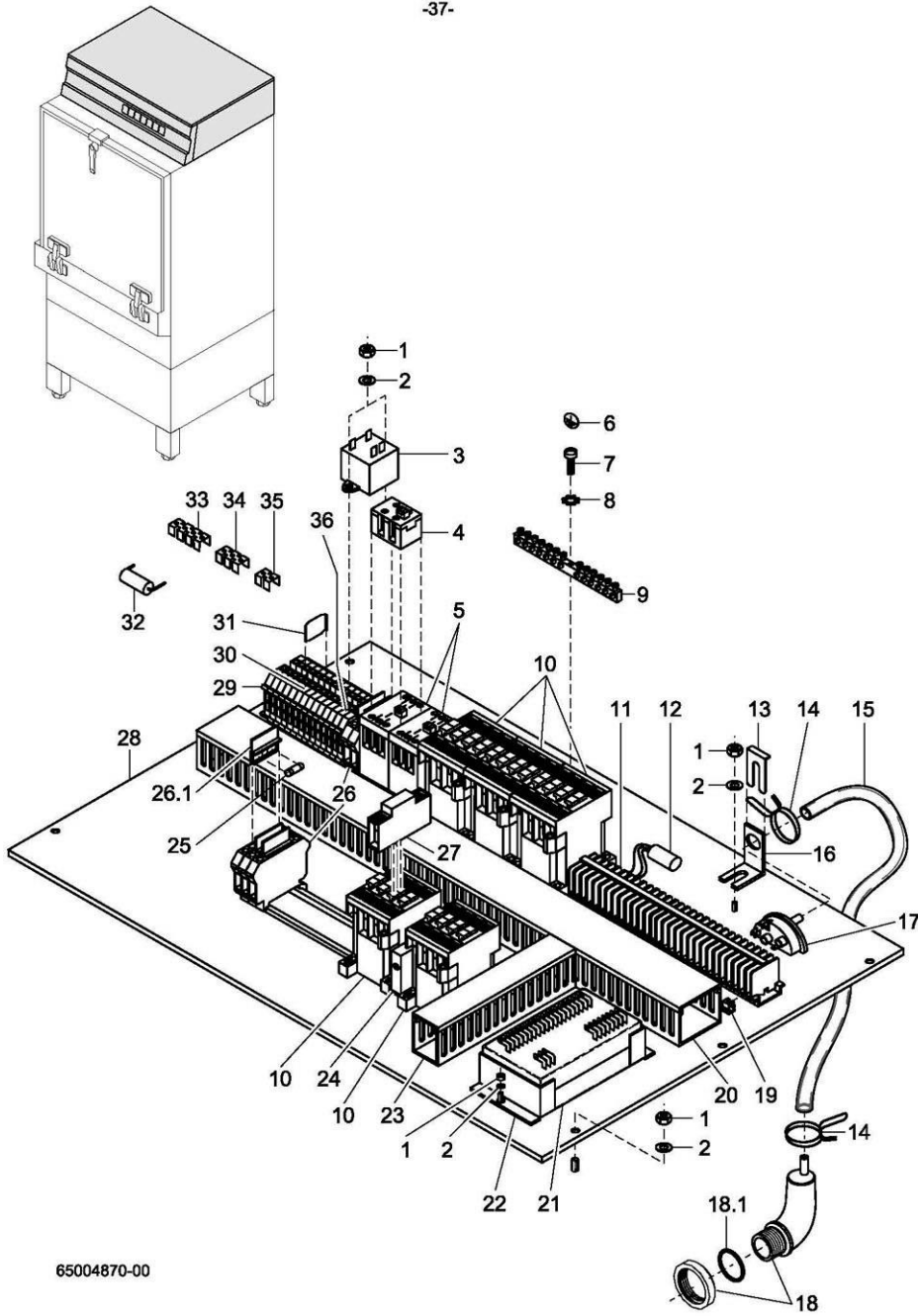
**GR 62/2**

Panelling

Item	Designation	Part no.	Pc.	Notes
1	Snap-on bushing; ø 18 x ø 13	31 10 069	2	mach.-no.: 342 721 ⇨
2	Sheet-metal screw, B 3.9 x 16	20 20 300	6	
3	Panel; right	55 03 049		mach.-no.: ⇨ 342 720
	Panel; lateral	65003436		mach.-no.: 342 721 ⇨
4	Foot cleat; G 3/4"; 32 x 32 x 100	35 01 064	4	mach.-no.: ⇨ 801 014
	Foot cleat; RD26 X 1/8; SW40 X 135	61004786	4	mach.-no.: 801 015 ⇨
5	Threaded insert; G 3/4"; 42 x 62 x 50	35 01 063	4	mach.-no.: ⇨ 801 014
	Threaded insert; RD26 X 1/8;39 X 59 X85	61004787	4	mach.-no.: 801 015 ⇨
6	Cover; inside	65002918		mach.-no.: ⇨ 342 720
7	Panel; front	65003491		
8	Supporting frame cpl.	65002866		
9	Panel; lateral	65003436		
10	Sheet-metal nut; B 3.9	21 17 300	16	
n.p.	Rear panel	80001500		optional equipment
n.p.	Wall end piece	80001117		
n.p.	Foot extension; 50mm	80000542	4	
n.p.	Foot extension; 100mm	80000546	4	





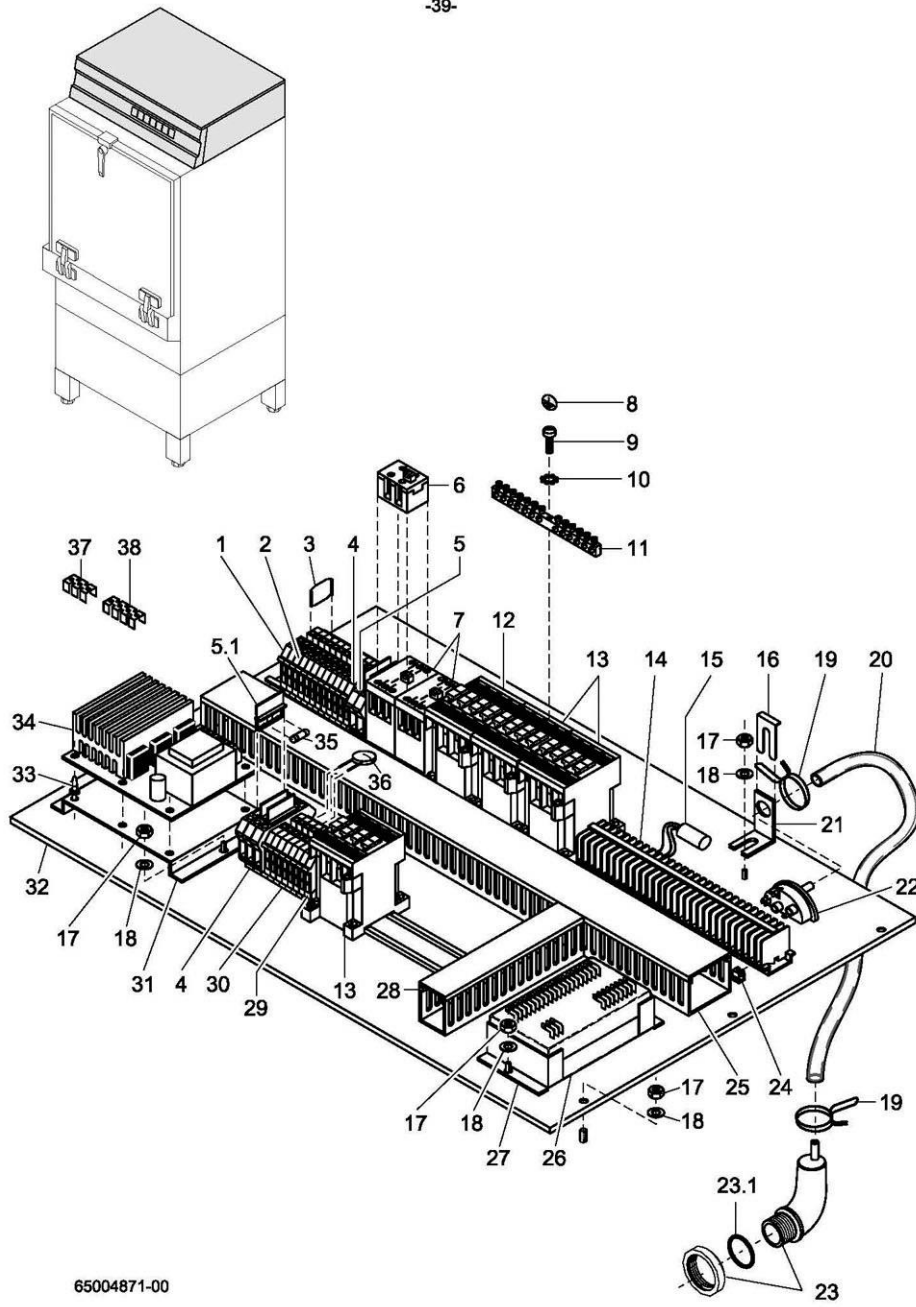


GR 62/2

Electrical parts II

Item	Designation	Part no.	Pc.	Notes
1	Hex nut; M 4 self-locking	21 05 300		
2	Washer; $\varnothing$ 4.3 x $\varnothing$ 12.0 x 1.0	22 05 300		
3	Radio interfer. suppr. capacitor; 3 x (0.47 $\mu$ F + 1M $\Omega$ )	31 13 072		
4	Contact module; LA1-SK11	31 04 130		
5	Contact relay; 220-240 V; 50/60 Hz; CA2-SK20	31 04 115	2	
6	Earth symbol; green/yellow	31 09 096		
7	Pan-head screw; M 4 x 8	20 10 210		
8	Toothed lock washer; J 4.3	23 01 002		
9	Terminal block; PE KLB 12/SEV	31 09 094		
10	Contact; A16; 220-255V; 50/60Hz	31 04 162	5	
	Contact; A16; 200V; 50/60Hz	31 04 163		Japan
11	Strip terminal BK 4 - FS/FS	31 09 025	30	
12	Radio interf. suppression capacitor; 0.1+ 2 x 0.01 $\mu$ F	31 13 071		
13	Clamping spring for level controller	31 26 001		
14	Cable binder; 162 x 2.5	31 20 014		
15	Hose; nom. dia. 5 x 1.5 x 1030	40 01 024		per metre
16	Support; level controller	61002345		
17	Level controller; 60/100 $\pm$ 5	31 26 020		orange
18	Air chamber cpl.	60003525		incl. item 18.1
18.1	O-ring	30000196		
19	Straps	31 09 012	8	
20	Cable duct 60 x 40 x 600	65002771		
21	Electr. Programme switch; EPS 1.1; 230V	31 05 131		
	Electr. Programme switch; EPS 1.1; 200V; 240V	31 05 132		
22	Support; programme switch	61003088	2	
23	Cable duct 60 x 25 x 180	65002772		
24	Closing delay device; 1 - 60 s	31 13 066		
25	Fine-wire fuse; 250V; 6.3A	31 11 043	4	
	Fine-wire fuse; 250 A; 2.0A	31 11 042	6	power supply: 200V / 230V
	Fine-wire fuse; 250V; 1.0A	31 11 039	5	power supply: 400V
26	Universal fuse terminal; UK-Si	31 09 063	5	incl. item 26.1
26.1	Fused plug	31 09 072		
27	Auxiliary switch; make contact	31 04 166		
28	Switch box base	65002956		
29	Universal terminal; USLKG 10 gn-ye	31 09 059	2	
30	Universal terminal, grey UK 10	31 09 057	10	
31	Isolating disk TS-K	31 09 066	3	
32	Radio interference suppr. capacitor; 33000pF; 250V	31 13 073		
33	Fixed bridge; FB 4-8	31 09 148		
34	Fixed bridge; 3-pin; FB 10-8	31 09 138	3	
35	Fixed bridge; 2-pin; FB 10-8	31 09 128		
36	Universal terminal; UK 10 blue	31 09 058	2	





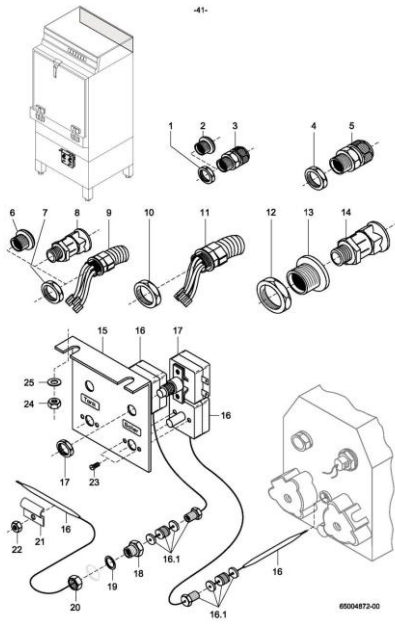
65004871-00

**GR 62/2**

Mach.-no.: ⇨ 342 720

**Electrical parts II - with soft starter**

Item	Designation	Part no.	Pc.	Notes
1	Universal terminal; USLKG 10 gn-ye	31 09 059	2	
2	Universal terminal, grey UK 10	31 09 057	10	
3	Isolating disk TS-K	31 09 066	2	
4	Universal terminal; UK 10 blue	31 09 058	2	
5	Universal fuse terminal; UK-Si	31 09 063	5	incl. item 5.1
5.1	Fused plug	31 09 072		
6	Contact module LA1-SK11	31 04 130		
7	Contact relay; 220-240 V; 50/60 Hz; CA2-SK20	31 04 115	2	
8	Symbol „Potential Earth“; green/yellow	31 09 096		
9	Pan-head screw; M 4 x 8	20 10 210		
10	Toothed lock washer; J 4.3	23 01 002		
11	Terminal block; PE KLB 12/SEV	31 09 094		
12	Contact; A30; 220-255V; 50/60Hz	31 04 164		
	Contact; A30; 3H; 1Ö; 200V; 50/60Hz	31 04 165		Japan
13	Contact; A16; 220-255V; 50/60Hz	31 04 162	3	
	Contact; A16; 200V; 50/60Hz	31 04 163		
14	Strip terminal BK 4 - FS/FS	31 09 025	30	
15	Radio interf. suppression capacitor; 0.1+ 2 x 0.01 µF	31 13 071		
16	Clamping spring for level controller	31 26 001		
17	Hex nut; M 4 self-locking	21 05 300		
18	Washer; ø 4.3 x ø 12.0 x 1.0	22 05 300		
19	Cable binder; 162 x 2.5	31 20 014		
20	Hose; nom. dia. 5 x 1.5	40 01 024		per metre
21	Support; level controller	61002345		
22	Level controller; 60/100 ± 5	31 26 020		orange
23	Air chamber cpl.	60003525		incl. item 23.1
23.1	O-ring	30000196		
24	Straps	31 09 012	6	
25	Cable duct 60 x 40 x 600	65002771		
26	Electr. Programme switch; EPS 1.1; 230V	31 05 131		
	Electr. Programme switch; EPS 1.1; 200V; 240V	31 05 132		
27	Support; programme switch	61003088	2	
28	Cable duct 60 x 25 x 180	65002772		
29	Earth symbol; green/yellow	31 09 096		
30	Universal terminal; UK5N grey	31 09 049	9	
31	Bracket	65003258		
32	Switch box base	65002956		
33	Spacer; printed board	31 13 044	6	
34	Conventional creep-start conversion kit	55 28 196		
35	Fine-wire fuse; 250V; 6.3A	31 11 043	4	
	Fine-wire fuse; 250 A; 2.0A	31 11 042	6	power supply: 200V / 230V
36	Varistor; 400 V	31 13 098	3	
	Varistor; 200-220V	31 13 100	3	Japan
37	Fixed bridge; FB 10-8	31 09 138	2	3-pin
38	Fixed bridge; FB 4-8	31 09 148		4-pin

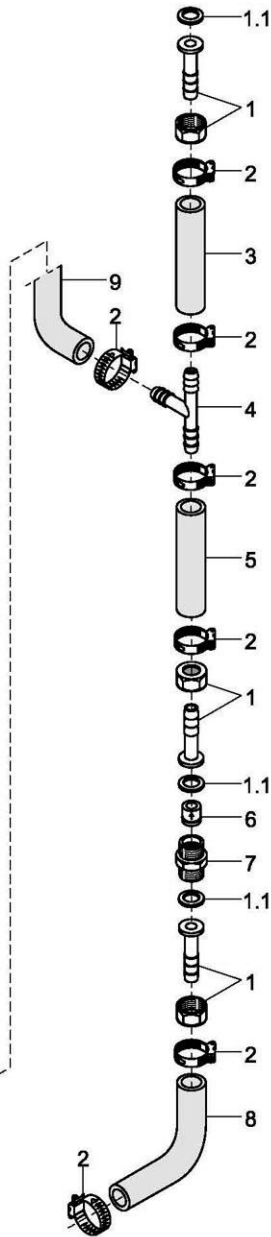
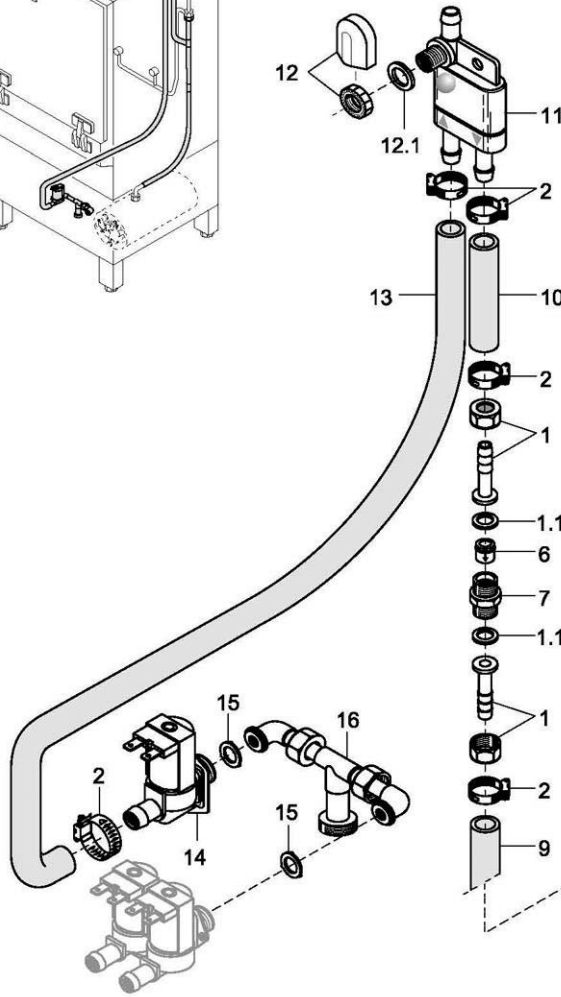
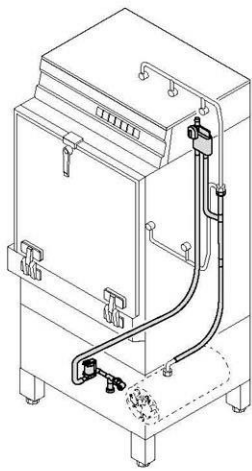


65004872-00

**GR 62/2**

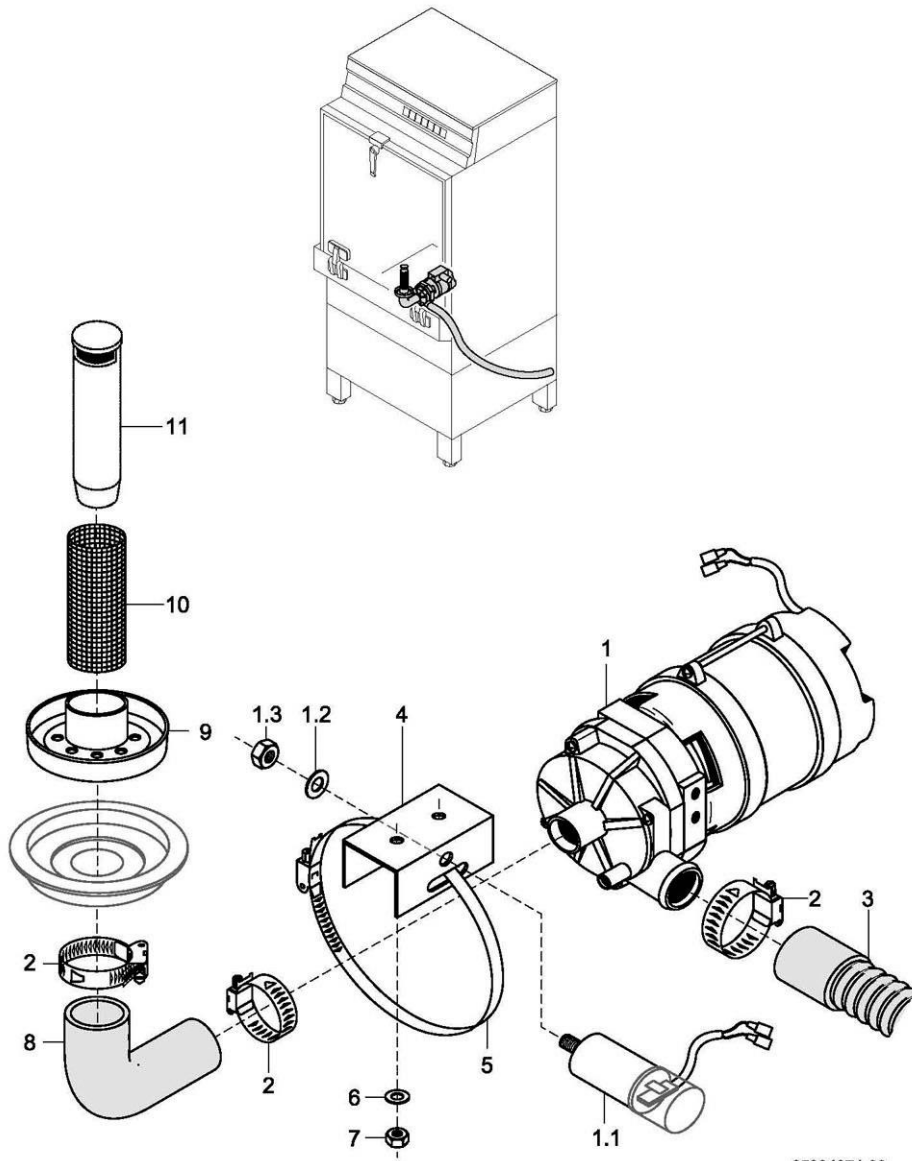
Electrical parts III

Item	Designation	Part no.	Pc.	Notes
1	Hex nut; PG 9	31 10 043	3	
2	Screw cap; PG 9	31 10 021	2	
3	Cable gland; PG 9	31 10 042		
4	Hex nut; PG 11	31 10 045		
5	Cable gland; PG 11	31 10 044		
6	Screw cap; PG 16	31 10 025		
7	Hex nut; PG 16	31 10 110	4	
8	Cable gland; PG 16 with strain relief device	31 10 049	3	
9	Harness; control	65002950		
10	Hex nut; PG 21	31 10 071		
11	Harness; three-phase current	65002951		
12	Hex nut; PG 29	31 10 047		
13	Reducing ring; KUK 29/21	31 10 091		
14	Cable gland; PG 21 with strain relief device	31 10 070		
15	Thermostat support	65002459		
16	Thermostat; 1750mm long	31 25 013	2	incl. item 16.1
16.1	Stuffing box gland	31 25 012		
17	Safety thermostat; 140°C - 10K "OFF"	31 25 030		
18	Stuffing box for thermostat; M 14 x 1	31 25 001		
19	Seal; ø 14.2 x ø 20 x 2.0	27 09 036		
20	Hex nut; M 14 x 1 x 5	31 25 002		
21	Thermostat clip	55 19 011		
22	Hex nut; M 4 self-locking	21 05 300		
23	Pan-head screw; M 4 x 8	20 10 309		
n.p.	Lock washer; B 8	23 03 301		
24	Hex nut; M 5 self-locking	21 05 302		
25	Washer; ø 5.3 x ø 12 x 0.8	22 02 213		
n.p.	Feeder cable; 5 x 2.5 mm <sup>2</sup> x 3000	31 23 132		
n.p.	Power supply cable; 5 x 4.0 mm <sup>2</sup> x 3000	31 23 139		
n.p.	Power supply cable; 4 x 6.0 mm <sup>2</sup> x 3000	31 23 130		
n.p.	Cable; 4 x 2.5 mm <sup>2</sup> x 2400	65000273		pump
n.p.	Cable; 4 x 2.5 mm <sup>2</sup> x 2400	65000274		heating element; soft starter
n.p.	Wire assortment; switch box	65002946		
n.p.	Wire assortment; final assembly	65002947		
n.p.	Additional wires; control box	65003588		
n.p.	Additional wire assortment; control box	80001820		



65004873-00

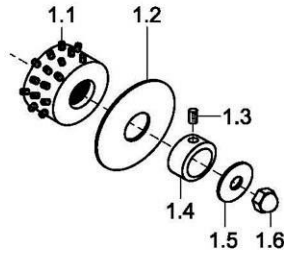
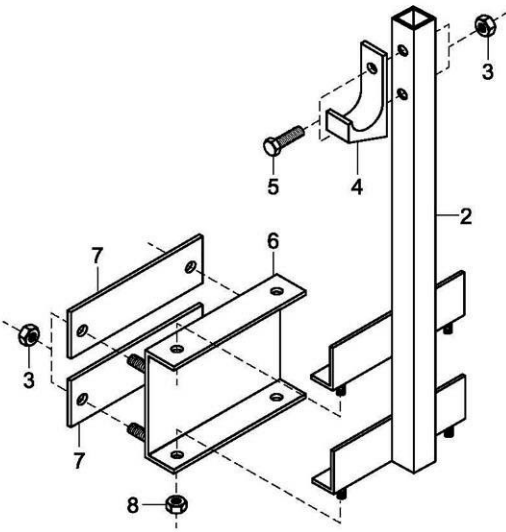
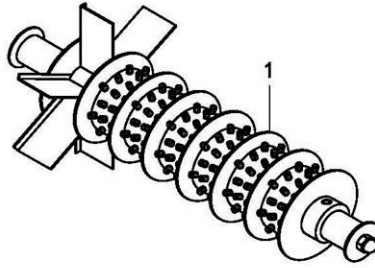
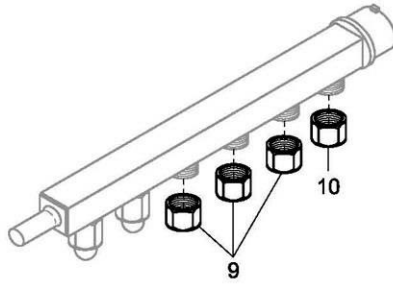
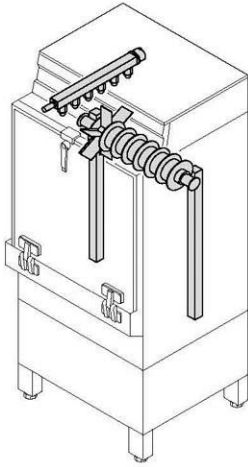




65004874-00







65004875-00

